

High Power HiMid System - digitally powered **K 24 dp**



The self-powered high-performance top K 24 dp is suitable for all sound applications requiring a fast set-up, very high power reserves and a good sound. The 2 x 12" / 1.4" combination weighs just 37 kg including the integrated flying hardware, can be hung one above the other for longer arrays and is extremely compact. The optional flying bracket is very simple to attach using the ball lock pin and can be adjusted to the desired angle. The high-quality low-noise two channel (bi-amp) DSP amplifier provides for a max. SPL of up to 140 dB.

PRODUCT SPECIFICATIONS

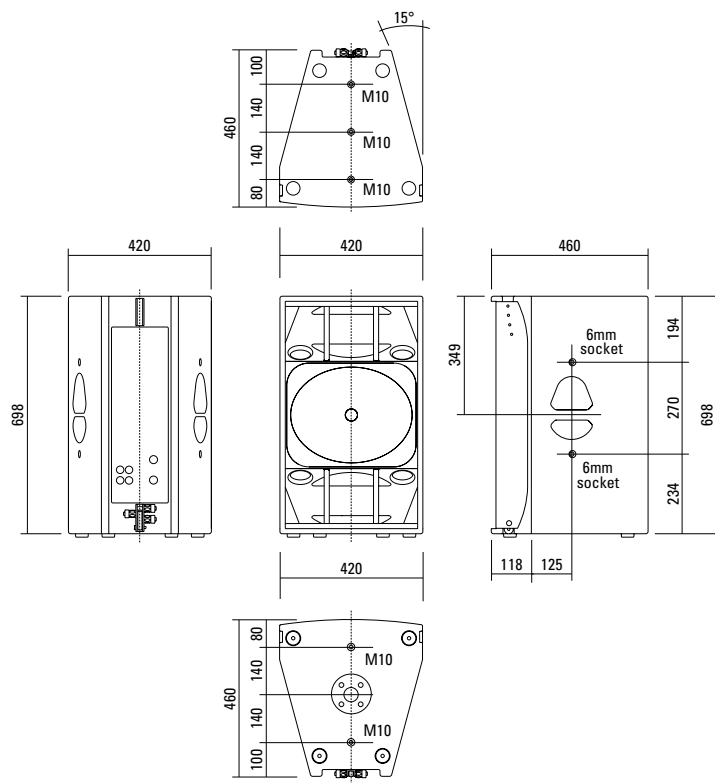
Speaker Components	2 x 12" Nd / 1,4" Nd
Description	High Power HiMid System
Amp Power	LF: 2400 W RMS / 110-230 V HF: 700 W RMS / 110-230 V
Rated Current	2,2 A @ 230 V
SPL <small>Peak @ 1 m</small>	140 dB
Max. Input Signal	25 dBu
DSP	HDLM FPGA Processing 32 bit floating point
AD / DA	24 bit / 96 kHz
Latency	0,8 ms (analog in to analog out)
Usable Range <small>- 6 dB</small>	75 Hz - 19 kHz
Tuning Frequency <small>excursion minimum</small>	85 Hz
X - Overpoint <small>acoustical</small>	Depends on preset
Coverage <small>horizontal / vertical</small>	60° x 50° (60°-version) 90° x 50° (90°-version)
Max. Splay Angle	12°
Connectors	Neutrik XLR in/out Neutrik PowerCon in/out
Handles	2 x
Rigging / Fittings	5 x M10 / 4 x 6 mm socket Integrated flying hardware 35 mm pole mount
Weight	37,0 kg (+ 7,0 kg wheel board)
Size <small>height x width x depth</small>	70,0 x 42,0 x 46,0 cm
Order No.	01029/dp/60° (60°-version) 01029/dp/90° (90°-version)



Control Panel of the K 24 dp.

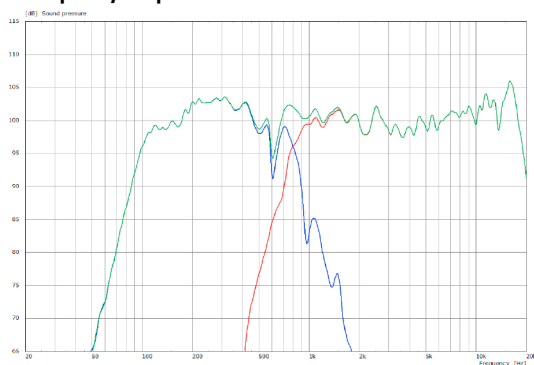


DIMENSIONS

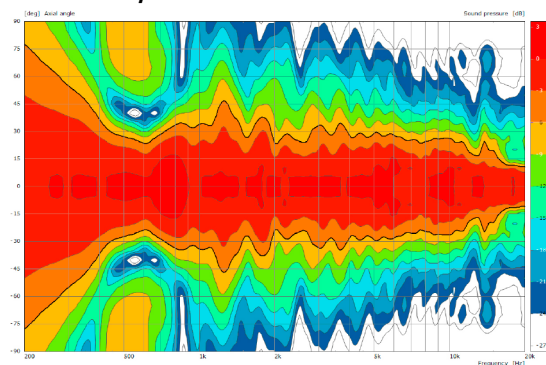


MEASUREMENTS

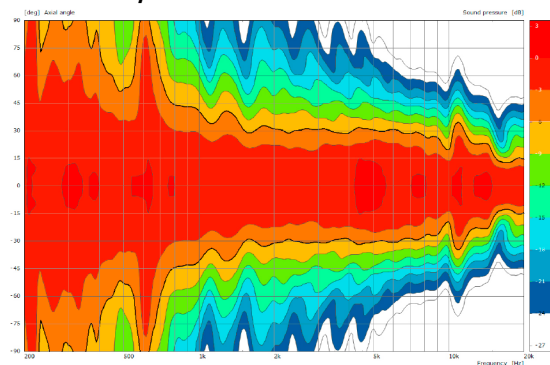
Frequency Response with Preset



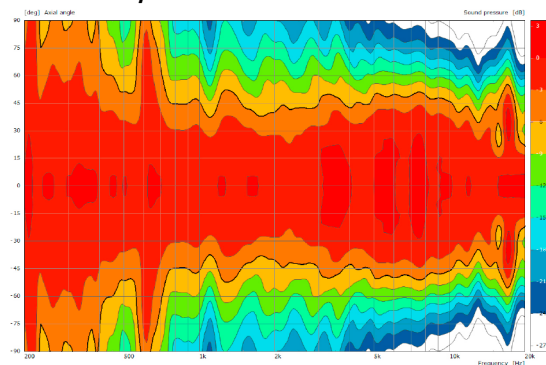
2D Directivity Plot - vertical



2D Directivity Plot - horizontal 60°



2D Directivity Plot - horizontal 90°



The technical performance features of the K 24 and its exceptional compactness were only possible by means of a complex acoustic interplay between the individual components and their control systems.

As a result, the performance characteristics and quality attributes were optimised to such a level that they are able to compete with and even surpass significantly larger systems.

To increase the degree of efficiency, the two 12" low-midrange speakers are initially directed into an acoustic bandpass and then into a hybrid horn. The symmetrical set-up ensures even and balanced coverage.

The generously dimensioned elliptical horn featuring a curved design for wide coverage ensures a highly accurate and long throw.

The cabinet is fitted with a sophisticated reinforcement system in order to prevent unwanted resonance.



K 24

The drivers are installed such that the voice coils are in the same vertical plane to ensure phase coherence even when using the passive crossover.





The integrated Flying System.



The Flying Cradle – up to three K 24 systems can be flown vertically.



Simple interconnection of systems by means of integrated Spacer.



Spacer with "parking space" for the Ball Lock Pin.



Integrated Flying System with four adjustable Splay Angles.



Bracket.

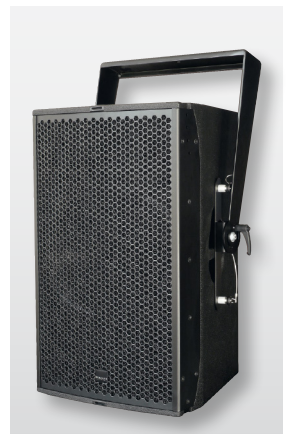


K 24 as Stack
with G Sub.

Accessories.



Removable Wheel Board for simple transportation.



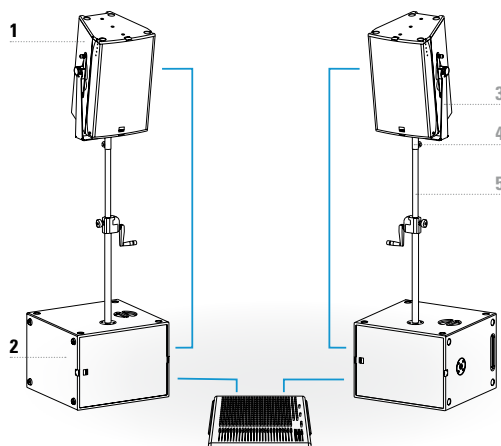
The Flying Bracket is very simple to attach using the Ball Lock Pin and can be adjusted to the desired angle.



The K 24 System.

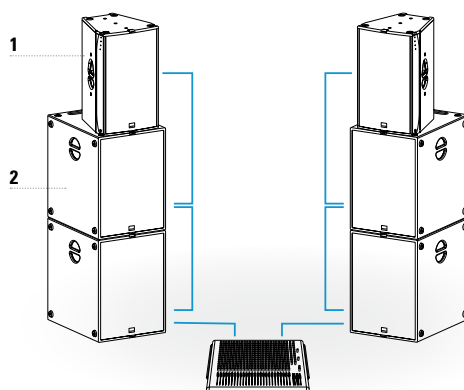
The K 24 dp not only performs well when used in the basic version, but can also be extended as desired to a larger system suitable for halls and open-air events.

Whether you opt for the G Sub 1801 dp (1 x 18") with its low tuning frequency, for the more punchy sounding K Sub 1502 dp (2 x 15") or for the direct radiating K Sub 1801 dp (1 x 18") is more or less a matter of taste. The system can be used flown or ground stacked and is easily extendable.



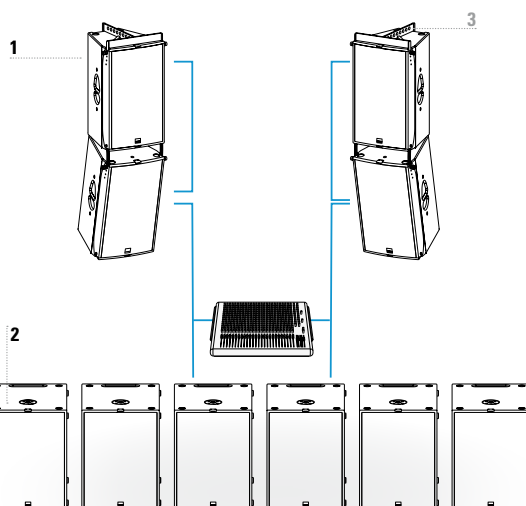
Basic System

Components	Order No.
1 2 x K 24 dp	01029/dp
2 2 x K Sub 1801 dp Selfpowered version	01060/dp
Accessories	Order No.
3 Flying Bracket	01209/set
4 Pole Mount Adapter	08127/nut
5 Speaker Pole	03022



Standard System

Components	Order No.
1 2 x K 24 dp	01029/dp
2 4 x K Sub 1801 dp Selfpowered version	01060/dp



XL System

Components	Order No.
1 4 x K 24 dp	01029/dp
2 6 x K Sub 1801 dp Selfpowered version	01060/dp
Accessories	Order No.
3 2 x Flying Cradle	01355

The K 24 dp features integrated digital amplifier electronics with a DSP controller. Various factory-configured presets and volume settings can be selected.

High-grade electronic components from the industrial sector and a first-class circuit design ensure excellent audio quality

with low distortion and a minimal noise floor.

Highly efficient and "intelligent" limiter systems ensure optimum protection against overload, without restricting the possibilities offered by this high-performance sound system.

Level

Adjustment in 3 dB steps (-6 dB to +3 dB).

Status

Mute LED

Red light when the system is muted or under technically critical conditions.

Limit LED

Yellow light when the limiter is restricting the level.

Signal LED

Green light when the input signal exceeds -20 dBu.

Power LED

Green light when the system is switched on.

K24dp

High Power HiMid System



Made in Germany
www.seeburg.net



Serial No.:

Components	2x 12" Nd / 1,4" Nd
Input Impedance	10 kΩ
Power (RMS)	LF: 2400 W HF: 700 W
Operation Voltage	Universal Mains 85 - 268V (dual voltage auto selection)
Maximum SPL	140 dB @ 1m
Frequency Range	75 Hz - 19 kHz
Tuning Frequency	85 Hz
Coverage	60° x 50°
Weight	37 kg

Presets

Flat

This setting provides a linear frequency response with a neutral sound characteristics. Standard setting for many applications.

High Boost

For use on long distances.

Soft

Reduces the level in the frequency range from 2.5 - 5 kHz, to which the ear is particularly sensitive. This setting is recommended for high level reproduction of highly compressed music tracks.

Safe Limit

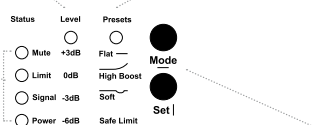
-3 dB reduction of the limiter threshold to avoid damage by misuse.

Mode - key

Switches between control modes: Status, Level and Presets.

Set - key

Setting of various values and Mute on / off.



1 = Ground / 2 = Signal+ / 3 = Signal-



PowerCon



Signal In



Loop Thru



PowerCon Loop Thru

PowerCon (blue)

Power supply
~ 110-230 V / 16 A max.

XLR

Symmetrical analog input
max. Input +25 dBu.
Effective filter protection against HF interference and DC Voltages.
Electronically balanced to prevent noise.

PowerCon (grey)

~ 110-230 V / 16 A max.
loop through connector.

Flying Cradle



for K 24,
incl. (1 x 6 x 25 mm ball lock pin,
1 x steel rope)

Order No. **01355**

Flying Bracket



for K 24,
incl. (4 x ball lock pins 6 x 18 mm,
4 x steel ropes, 2 x handle screws
M8 x 20 mm)

Order No. **01209/set**

Handle Screw



M8 x 20 mm,
adjustable

Order No. **08376**

Ball Lock Pin



for K 24 (front), 6 x 18 mm

Order No. **01380/K24/grip 18 mm**

for K 24 (rear), 6 x 25 mm

Order No. **01380/K24/grip 25 mm**

Pole Mount Adapter - M20



for flying bracket,
M20 x 35 mm with nut,
incl. 1 x M20 x 30 socket head screw,
1 x flat

Order No. **08127/nut**

Quick Trigger TV Clamp



Max. load 200 kg

Order No. **01223/TV**

Quick Trigger Clamp



max. load 100 kg

Order No. **01223/100 kg**

TV Adapter



M20 external thread,
28 mm Ø

Order No. **08128/M20**

Ring Screw



M10– DIN 580

Order No. **73700** (zincd)

Order No. **73700/sw** (black zincd)

Shackle



cambered, high-quality tempered,
with bolt (ø 12 mm), weight: 0,14 kg,
WLL 1000 kg

Order No. **01372/1000**

Steel Safety



8 mm x 600 mm, black,
max. load 40 kg (BGI 810-3),
quick connector undetachably

Order No. **01376/8**



TV Adapter -> Flying Bracket

ACCESSORIES K 24 dp

Speaker Stand



K&M, incl. wind up,
height 138,5 to 218 cm,
max. load 50 kg,
Order No. **03011**

Horn 90° x 50°



for K 24, 90° x 50°
Order No. **01598**

Wheel Board



for K 24, stackable
Order No. **01266**

Flight Case



for 2 pcs. K 24 and accessories,
heavy duty, 9 mm birch multiplex,
PVC coated, 10 x recessed sprung
handles, 4 x butterfly catches,
4 x 100 mm blue wheels with brake,
2 x scanner windows, inserts for
accessories, interior lined with felt.
Order No. **16030/K24+**

Hybrid Cable System



PowerCon-PowerCon / XLR-XLR
2,5 m Order No. **08462**
5 m Order No. **08464**
10 m Order No. **08466**
15 m Order No. **08468**

Rain Cover



for K 24
Order No. **01255/outdoor**

Cover



for K 24 without wheel board
Order No. **01255**

Cover



for K 24 by using wheel board
Order No. **01255/WB**

